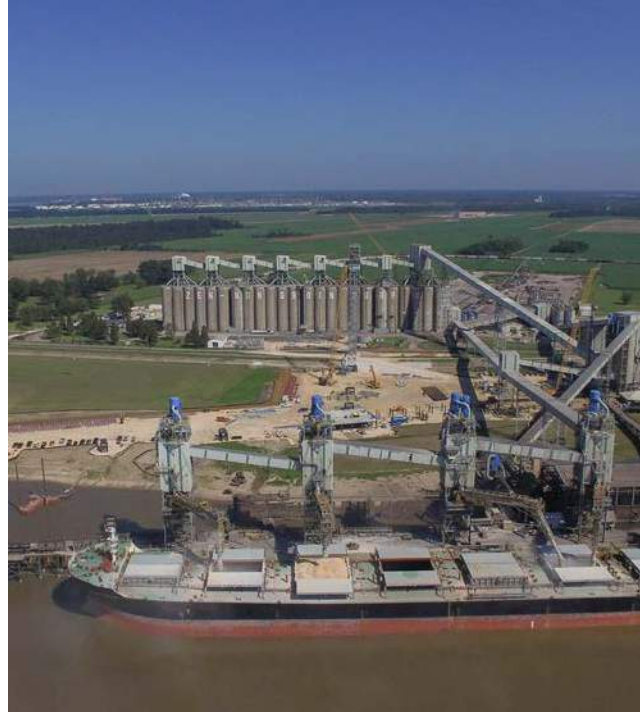


BROWN

SERVICES SUMMARY





// DRIVEN BY SERVICE

Our culture of proactive safety & service makes our employees the best at what they do.

SERVICES

Heavy Civil Construction Services:

Industrial Concrete:

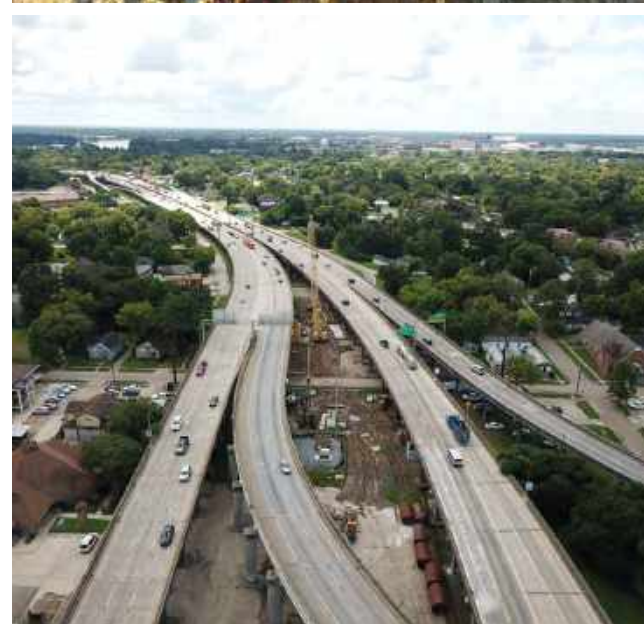
- ✓ Concrete Foundations
- ✓ Tank Foundations
- ✓ Area Paving
- ✓ Slope Paving
- ✓ Sumps and Basins
- ✓ Concrete Demolition and Screening

Bridge, Road, and Rail Construction:

- ✓ Flat Slab and Girder Bridge Construction
- ✓ Elevated Concrete Structures
- ✓ Concrete Paving
- ✓ Cast in Place and Pre-cast Structures
- ✓ Pile Driving
- ✓ Rail

Site Work Construction Services:

- ✓ Clearing and Grubbing
- ✓ Excavation and Embankment
- ✓ Material Placement
 - Dirt
 - Sand
 - Aggregate/Crushed Stone
- ✓ Soil Stabilization
 - Lime Treatment
 - Cement Treatment
- ✓ Subsurface Drainage
 - HDPE
 - RCP
 - CMP



General Maintenance and Early Works Services:

Maintenance & Early Works Construction:

- ✓ Parking and Laydown – Build and Maintained
- ✓ Internal Access and Haul Roads – Build and Maintained
- ✓ Crane Pads
- ✓ Setting Up Trailers
- ✓ Trailer Deck Construction
- ✓ Tent/Warehouse Foundations & Pads
- ✓ Temporary Lighting – Set and Maintained
- ✓ Silt Fence – Install and Maintained
- ✓ Ditches – Install and Maintained
- ✓ Signage – Install and Maintained

Maintenance Services:

- ✓ Road and Access Repair:
 - Blade Roads Daily
 - Mitigate Potholing and Eroding
- ✓ Street Cleaning/Sweeping
- ✓ Grass Cutting / Bush Hogging
- ✓ Weed Spraying/Suppression
- ✓ Daily Trash Removal
- ✓ Parking Block Maintenance
- ✓ Dewatering
- ✓ Maintain Concrete Washout Pit:
 - Stockpile then Crush for Site Use
- ✓ General Plumbing Tasks
- ✓ General Carpentry Tasks
- ✓ General Civil and Site Work Task
- ✓ Provide Onsite Logistics for Material Moving:
 - Off-road Trucks
 - Triaxle Dump Trucks
- ✓ Material Stockpiling and Onsite Management



Civil-Structural Engineering Services:

✓ Concrete

• Shallow Foundations: Mat/Spread Foundations

- MPS/MES Fdns
- Pipe Rack Fdns
- Bldg Fdns
- MCC Fdns
- Equipment Fdns
- Containment Area Fdns
- Piperack Foundations

• Tank Foundations:

- Ring wall Foundation
- Pile Cap + Deep Foundations
- Aggregate Base Foundation

✓ Deep Foundations:

- Driven Piles
- Auger Cast
- Drilled Shaft Piles

✓ Structural Steel:

- MPS's
- MES's
- Piperack
- Equipment Structures

✓ Drainage/Site Work:

- Site Work Plans Section Cuts & Details
- Underground Drainage Designs - RCP & CB's
- Trench Design
- Sump Design

✓ Containment Areas:

- Tank Containments
 - Earthen Dikes
 - Concrete Dikes
- Rail Loading Containments
- Equipment Containments

✓ Roadways/Sidewalks

- Concrete
- Asphalt

✓ Architectural:

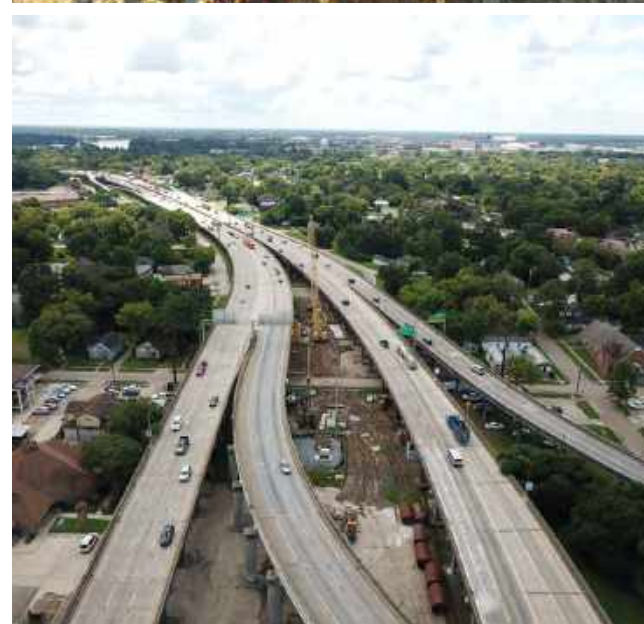
- Building Design

✓ Demo:

- Demo Drawings

✓ Survey:

- Traditional
- Drone Survey



EXPERIENCE

SITE PREP

HUNTSMAN

HYCO Plant Expansion for Huntsman/Air Products. Project included green field and brown field parking lot, laydown, and road construction: clearing and grubbing, soil stabilization, material placement, sub-surface drainage, demolition, and concrete foundations.

- ✔ Clearing and Grubbing
- ✔ Excavation & Embankment
- ✔ Soil Stabilization
- ✔ Material Placement
- ✔ Sub-Surface Drainage
- ✔ Demolition
- ✔ Concrete Foundations

📍 Geismar, LA





Constructed Access Road, Rail, Sub-Base, Drainage Canals and Sub Surface Drainage for rail car unloading associated with Port Of Greater Baton Rouge infrastructure to serve rail facilities.

-
- ✔ Rail
 - ✔ Excavation
 - ✔ Sub-Surface Drainage
 - ✔ Soil Stabilization
 - ✔ Material Placement

📍 Port Allen, LA





Grassroots site development for a laydown facility associated with the Phase 1 expansion. Our crews performed soil stabilization, material placement, and drainage infrastructure installation.

-
- ✔ Excavation
 - ✔ Embankment
 - ✔ Sub-Surface Drainage
 - ✔ Material Placement
-

📍 Geismar, LA





Site development for Millennium Galvanizing grassroots plant construction. Design-build services included cross section development, sub-base stabilization utilizing lime treatment, base installation, and drainage infrastructure construction.

-
- ✔ Design Build
 - ✔ Soil Stabilization
 - ✔ Material Placement
-

📍 Convent, LA



Cameron LNG

Grassroots construction of approximately 40 acre laydown area for LNG facility. Site work included excavation and embankment, drainage infrastructure installation and material placement. Brown Industrial Construction utilized their sister company, Brown Engineers and Consultants, to provide a turnkey solution completed within a 45 day time frame.

-
- ✓ Design Build
 - ✓ Excavation
 - ✓ Embankment
 - ✓ Drainage Infrastructure
 - ✓ Material Placement

📍 Lake Charles, LA





Site Construction for loading infrastructure expansion at Louis Dryfus facility in the Port of BR. Construction activities utilized Calcium Sulfate, a material available from our sister company Louisiana Recycled Aggregates, to construct a laydown yard and batture access across the Mississippi River Levee.

- ✓ Excavation
- ✓ Embankment
- ✓ Sub-Surface Drainage
- ✓ Material Placement

📍 Port Allen, LA



Honeywell

Construction of retention pond for plant-wide drainage capacity expansion. Services included excavation, rock trenching, HDPE fused piping installation & levee construction for the 4 acre pond.

- ✓ Excavation
- ✓ Embankment
- ✓ Sub-Surface Drainage

📍 Geismar, LA



Honeywell

Gypsum stack construction and stack management at Honeywell International. Project consist of mass material handling (>3,000,000 tons), excavations, embankment, sub-surface drainage, engineered de-watering systems, surface mining, and screening.

- ✔ Mass Material Handling
 - ✔ Excavation & Embankment
 - ✔ Sub-Surface Drainage
 - ✔ De-watering Systmes
 - ✔ Mining
 - ✔ Screening
-

📍 Geismar, LA





Constructed rail Sub-Base, Drainage Canals and Sub Surface Drainage for rail car unloading associated with Port Of Greater Baton Rouge infrastructure to serve rail facilities.

-
- ✔ Excavation
 - ✔ Sub-Surface Drainage
 - ✔ Soil Stabilization
 - ✔ Material Placement

📍 Port Allen, LA





Outfall Ditch Clean-out Phase II

Stabilized major facility outfall in an effort to reduce erosion and minimize debris accumulation in product recovery stream. Cleared and grubbed the outfall and placed riprap along the project area.

- ✔ Clearing & Grubbing
- ✔ Excavation
- ✔ Material Placement

📍 Baton Rouge, LA



ROADS & BRIDGES



THE SUNSHINE PROJECT

Early works construction effort to support the Formosa Sunshine St. James plant expansion. Works effort included site preparation, sub surface drainage, cast-in-place and pre-cast drainage systems, grading, embankment, and paving for over 2 miles of new road.

-
- ✓ Clearing & Grubbing
 - ✓ Excavation
 - ✓ Embankment
 - ✓ Material Placement
 - ✓ Soil Stabilization
 - ✓ Underground Drainage
 - ✓ Asphalt Paving





Work included construction of (2) 260' Flat Span Bridges and 4,960 LF of Detour Rd at 2 Sites along I-10 in New Orleans East. Median Bridges and Detour Rds were constructed to facilitate the Demolition of (4) 240' Girder Bridges and the Reconstruction of (4) 260' Flat Span Bridges for East & West bound travel lanes over existing Bayou Savage drain canals. Each Flat span is approximately 3 lanes (61' wide and 20' long).

The construction of these spans are supported by (556) 82' & 92' long Precast concrete pile. These Bridges also include the construction of 2,280 LF of Single & Double Faced concrete barrier rail. The Project also consists of 5,120 LF of new asphalt concrete road way. The Project Schedule is under 600 Calendar days without impact to an Average Daily Traffic volume of 20,000+ motorist.

- ✔ Demolition
- ✔ Excavation/Embankment
- ✔ Dynamic Dewatering
- ✔ Pile Driving
- ✔ Structural Concrete

📍 Baton Rouge, LA





Work consisted of the construction of the I-110 offramp substructure and superstructures in downtown Baton Rouge adjacent to the Mississippi River. Work employed a mass concrete strategy for the construction of 8'x105' drilled shafts, hexagonal footings, 5'x20' columns, hammerhead caps, steel girders, decks, and railing.

- ✓ Demolition
- ✓ Embankment
- ✓ Pile Driving
- ✓ Structural Concrete

📍 Baton Rouge, LA





Work included demolition of existing timber pile bridge and concrete deck. Reconstruction of bridge using driven concrete piles, construction of pile caps, construction of concrete deck, and guard rail.

-
- ✔ Demolition
 - ✔ Embankment
 - ✔ Pile Driving
 - ✔ Structural Concrete

📍 Amite, LA





Work included demolition of existing timber pile bridge and concrete deck. Reconstruction of bridge using driven concrete piles, construction of pile caps, construction of concrete deck, and concrete bridge rail.

- ✓ Demolition
- ✓ Embankment
- ✓ Pile Driving
- ✓ Structural Concrete

📍 Zachary, LA



CONCRETE & PILE



St. James

Constructed complex concrete foundations for Methanol expansion in St. James. Work included survey and design, excavation and embankment, and concrete foundation construction.

- ✔ Concrete Foundation
- ✔ Excavation
- ✔ Material Placement

📍 St James, LA





Site development for Zen-Noh Grain Terminal expansion. Construction included clearing and grubbing, material placement, batture access, and crane pads as well as all associated drainage infrastructure for the site. Slope paving along the Mississippi River Levee was also included to provide long term infrastructure stability.

- ✓ Excavation
- ✓ Embankment
- ✓ Drainage Infrastructure
- ✓ Material Placement
- ✓ Slope Paving

📍 Convent, LA

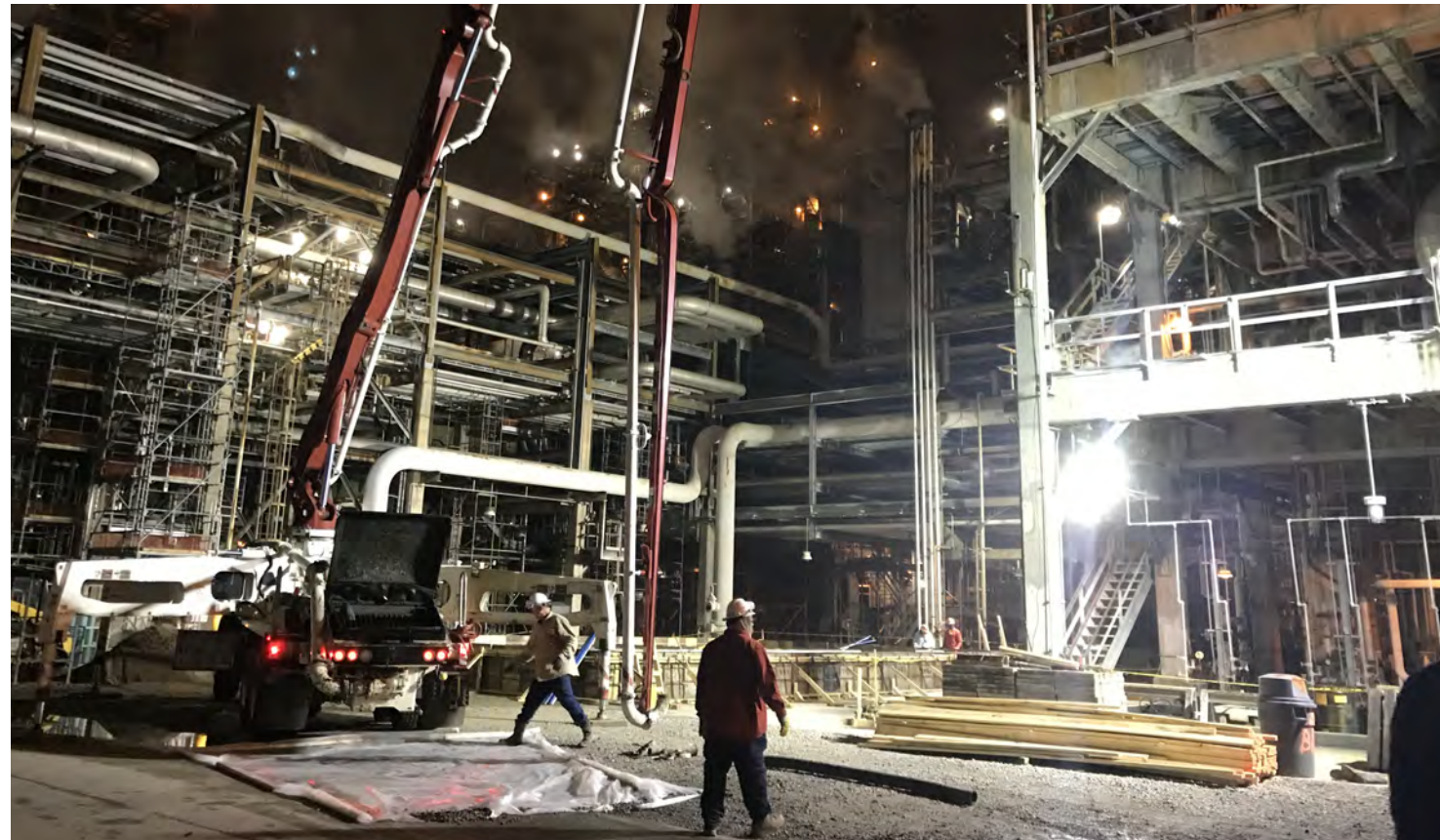




Construction efforts to support the Norco Major Maintenance and Turnaround Group. Work included, site grading, material placement, and the construction of concrete foundations.

- ✓ Excavation
- ✓ Sub-Surface Drainage
- ✓ Material Placement
- ✓ Concrete Foundations

📍 Norco, LA





St. James

Constructed complex concrete foundations for Methanol expansion in St. James. Work included survey and design, excavation and embankment, and concrete foundation construction.

- ✔ Concrete Foundation
- ✔ Excavation
- ✔ Material Placement

📍 St James, LA





Constructed Red Mud Filtration Addition Project.
Work included, survey and design, site development, concrete foundations and pedestal, and driven timber piles.

- ✓ Survey and Design
- ✓ Pile Driving
- ✓ Concrete Foundations
- ✓ Excavation
- ✓ Material Placement

📍 Gramercy, LA





Constructed the Air Products Geismar 3 HYCO Project. Work included, survey and design, site development, and 1300 driven concrete piling.

- ✔ Survey and Design
- ✔ Pile Driving
- ✔ Site Development
- ✔ Excavation
- ✔ Material Placement

📍 Geismar, LA



RAIL



Constructed rail sub-base, soil stabilization, installed drainage, and concrete foundations for the new rail yard associated with Chloro-Alkali Rail Expansion Project.

-
- ✔ Excavation
 - ✔ Sub-Surface Drainage
 - ✔ Soil Stabilization
 - ✔ Material Placement
 - ✔ Rail Construction
-

📍 Plaquemine, LA



SNF

Constructed rail sub-base and concrete foundations for rail tank car unloading associated with Emulsions Rail Expansion. Relocated fire water and drainage infrastructure to serve rail facilities.

- ✓ Excavation
- ✓ Sub-Surface Drainage
- ✓ Concrete Foundations
- ✓ Soil Stabilization
- ✓ Material Placement
- ✓ Rail Construction

📍 Plaquemine, LA



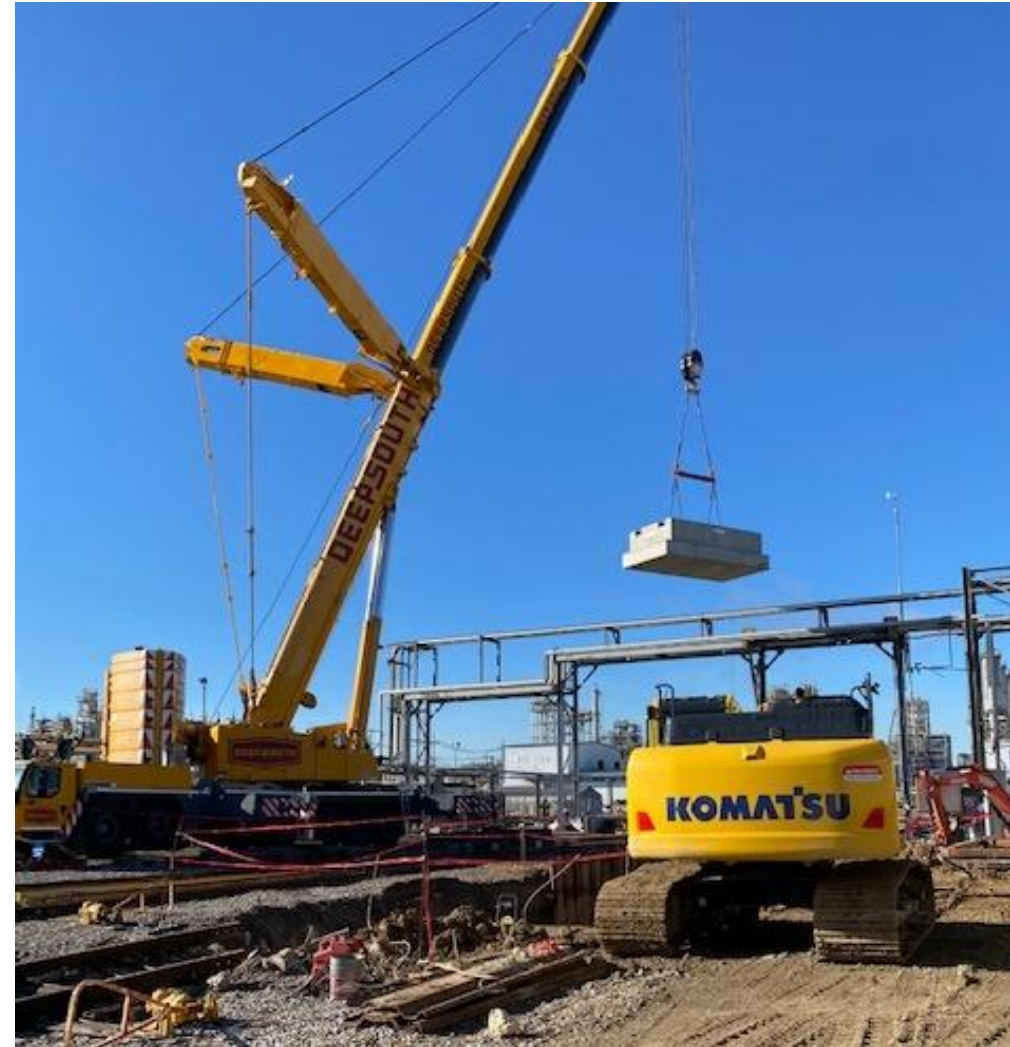


XOM PE Rail Scale Replacement

Demolished existing rail and foundations, Installed pre-cast concrete pits, Poured new concrete approaches, Limestone dress up.

- ✔ Rail Demo and Install
- ✔ Heavy Lifts
- ✔ Concrete Slabs

—
📍 Baton Rouge, LA





Constructed rail sub-base, soil stabilization, installed drainage, and concrete foundations for the new rail yard associated with PVC Rail Expansion Project.

- ✓ Excavation
- ✓ Sub-Surface Drainage
- ✓ Soil Stabilization
- ✓ Material Placement
- ✓ Concrete Foundations

📍 Geismar, LA



MONSANTO

Work included, mass excavation and embankment, for the installation of >100 - 4'x6' Box Culverts. Also included the installation of 450 ft single and tripple barrel runs utilizing 48" RCP culvert.

- ✔ Clearing and Grubbing
- ✔ Excavation & Embankment
- ✔ Box Culvert and RCP Culvert Installation

📍 Luling, LA



// KEEP IN TOUCH

**Let's Build Your
Vision of Tomorrow.**

New Project?

matt@brown-industrial.com

225.478.1055

Contact Us

727 Highlandia Dr. Baton Rouge LA 70810

info@brown-industrial.com

225.478.1006

Website

brown-ind.com